
NEXASTONE

STONE
SOUL

THREE
SIZES

6
COLOURS

PORCELAIN STONEWARE

MADE IN INDIA



oasis
Your Own Dream

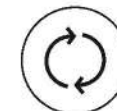


The **sophisticated charisma** of a famous Lombard stone with **new colours**, polychromatic inclusions, rich textured effects of **iridescent** reflections //

An all-inclusive assortment of porcelain stoneware: **six colours** and the full range of sizes, thicknesses, special pieces and finishes **for all kinds** of outdoor or indoor spaces //

Sensitech

SAFE. SOFT. SMART.



INDOOR & OUTDOOR
CONTINUITY



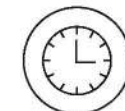
SOFT TO
THE TOUCH



EXTREMELY
SAFE - R10



HYGIENIC AND
EASY TO CLEAN



LONG-LASTING
QUALITIES



PREMIUM
TECHNOLOGY

CHAIRMAN'S # MESSAGE



MR. KARSHAN L. PATEL
Chairman
Oasis Tiles - India

ULTRA MODERN SURFACES FOR SPACES EXTRAORDINARY

Around the world, we've been witnessing **technological advancement** bringing in evolution to various industries. Likewise, the ceramic industry has also evolved from its primitive process of manufacturing tiles. This adaptation towards the contemporary changes has made **India world's 3rd largest manufacturer** across the globe.

The Oasis group is India's leading company in the manufacturing of **Vitrified & Wall tiles and Sanitary ware** products. An entity founded in 2006, has flourished its way to rapid success, crowned to be India's leading manufacturers in the ceramics industry. **Oasis** has been recently awarded as India's **Greatest Brands & Leaders 2016-2017** chosen by consumer & industry and also awarded **Power Brand India**,

Industry Trendsetter 2017, storming its way to the **top of ceramic tiles** brands in India. With such a huge label that we carry with ourselves, our strength lies in the amount of time and **technology** we provide for the **R&D department** that allows us to come up with **innovative and reliable solutions**. To put those solutions into practice, we have got on board, most **advanced technology**, and **machinery** that we source from Italy and Spain.

These parameters have helped us to obtain a massive growth rate since, in the year 2007, we had commenced with the **production capacity of 55.000 SqMtr.** per day along with exclusive Sanitary-Ware plant with a total production capacity of **2,50,0000** pieces every year. All in all, with an extensive range of **high gloss glazed** Vitrified tiles, Glazed Vitrified Tiles, Glazed Outdoor Vitrified Tiles, Full Body Vitrified Tiles, Double Charge Vitrified Tiles, Glazed Ceramic Wall Tiles and exclusive Sanitary-Ware collection, we are enroute to fulfilling your own dream.



INTO THE SOUL
NEXASTONE

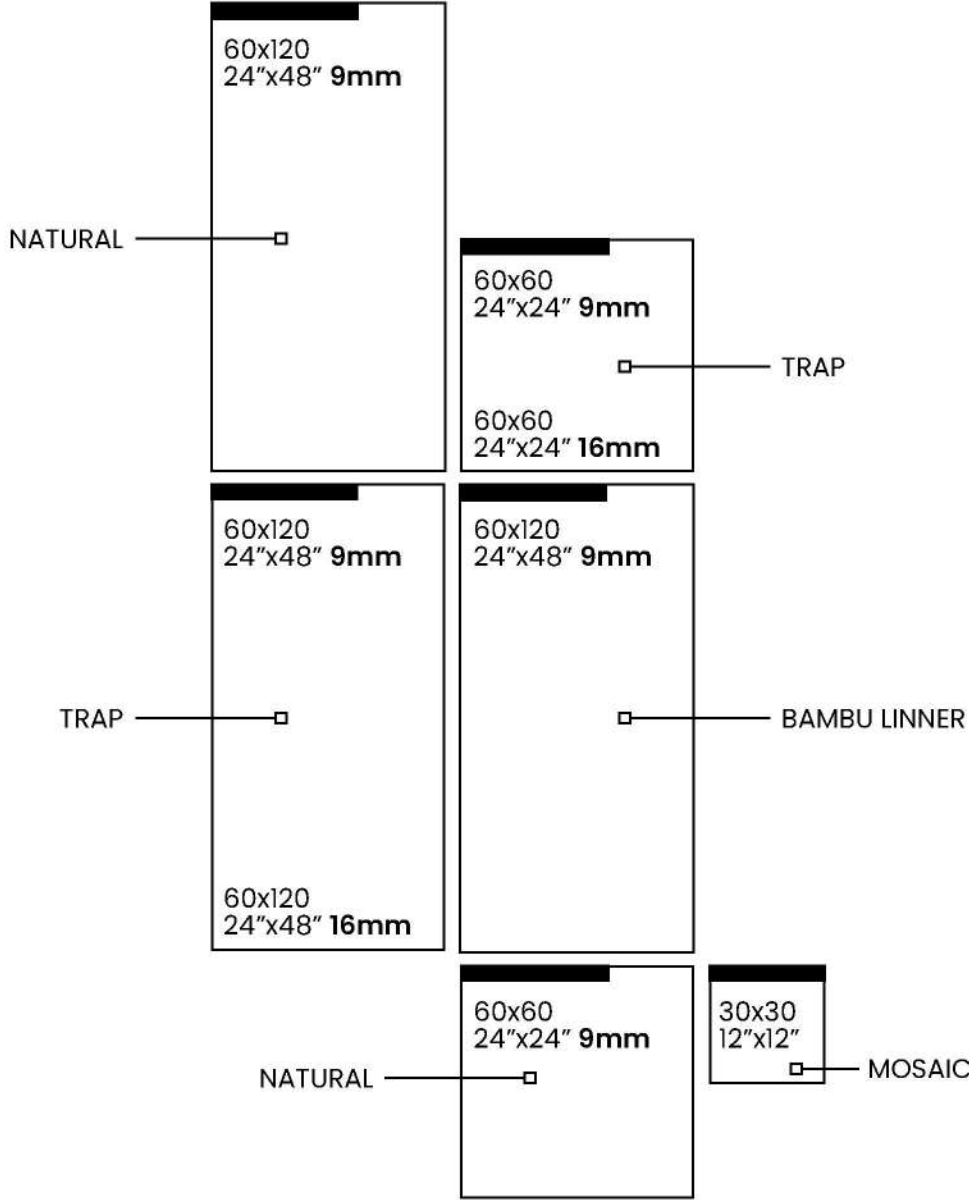
A multi-faceted matter:
each slab is a harmonious
composition of
multicoloured shades //
The **infinite irregular**
shaped fragments reflect
light diversely, thanks to
state of the art digital
technologies //



CREATIVE SURFACES

The classic grey is complemented by **new natural colours**, designed for **modern architecture** and decor: beige, sand, dark green and black // The palette allows **different combinations** and is enriched by the 5x5 tesserae or Palladian Mosaic //





R9. R10.





				I	A	S	E	P	L
<div><div></div><div>9.0mm</div><div></div><div>R9.</div></div>	<div></div>	60x60	24"x24"	✓	✓	✓	✓	✓	✓
	<div></div>	60x120	24"x48"	✓	✓	✓	✓	✓	✓
<div><div></div><div>16.0mm</div><div></div><div>R10.</div></div>	<div></div>	60x60	24"x24"		✓	✓	✓	✓	
	<div></div>	60x120	24"x48"		✓	✓	✓	✓	

The special **texture** of the **matter**, with a uniform colour base livened up by a balanced set of fragments, is ideal for **coating** any type of space and structure, respecting and **enhancing architectural structures'** movement //

A // HOME GALLERY



23 LIVING
PEARL



14 KITCHEN
EARTH



26 HOME OFFICE
PEARL



38 BATHROOM
IVORY



37 BATHROOM
LECCO/PEARL



55 RELEASE
ANTRACITE

B // GARDEN GALLERY



20 PATIO
EARTH



42 OUTDOOR
IVORY

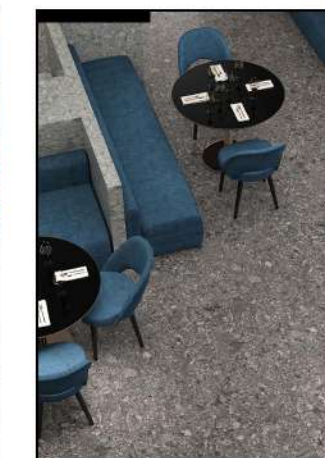


29 VILLA
PEARL

C // CONTRACT GALLERY



16 SHOP
EARTH



50 RESTAURANT
ANTRACITE



32 SPA
LECCO



47 DEHOR
SMOKE/ANTRACITE

A // HOME KITCHEN
EARTH

Floor
EARTH 60x120 . 24"x48" NATURAL

Wall
EARTH 60x120 . 24"x48" BAMBU LINER

#SPECIAL
SURFACE



C // CONTRACT SHOP
EARTH

Floor
EARTH 60x120 . 24"x48" TRAP

Sinuous and futuristic
furnishings, matched up
with **NexaStone Earth**
flooring conveying the feeling
of welcoming **naturalness //**



C // GARDEN PATIO EARTH

Floor Indoor
EARTH 60x120 . 24"x48" NATURAL

Floor Outdoor
EARTH 60x120 . 24"x48" TRAP

Wall
ANTACITE 60x120 . 24"x48"

#R9
INDOOR

#R10
OUTDOOR

A // HOME LIVING
PEARL

Floor
PEARL 60x120 . 24"x48" NATURAL

Space **renovations** which respect the original spirit and style //

The flooring is **brightly textured**, with a motion effect but not grained: perfect for enhancing the feeling of spaciousness also in small spaces //



Floor
PEARL 60x120 . 24"X48" TRAP





A // HOME STUDIO PEARL
Floor PEARL 60x120 . 24"x48" TRAP
Elements ANTRACITE



B // GARDEN VILLA PEARL

Floor
PEARL 60x120 . 24"x48" NATURAL
PEARL 60x120 . 24"x48" TRAP

Wall
PEARL 60x120 . 24"x48" BAMBU LINNER
ANTRACITE 60x120 , 24"x48" NATURAL

Flooring for outdoor spaces with **R10** non-slip finish, in this case with **16mm** thickness and two installation options: dry laying, on gravel and glued to the screed // The steps are finished in a workmanlike manner thanks to special pieces like stair tread and L-shaped piece //



Floor
PEARL 60x120 . 24"x48" NATURAL

Wall
PEARL 60x120 . 24"x48" TRAP



C // CONTRACT SPA
LECCO

Floor
LECCO 60x120 . 24"x48" NATURAL

Wall
LECCO 60x120 . 24"x48" BAMBU

Wall
LECCO 60x120 . 24"x48" NATURAL

#SPECIAL
PIECES

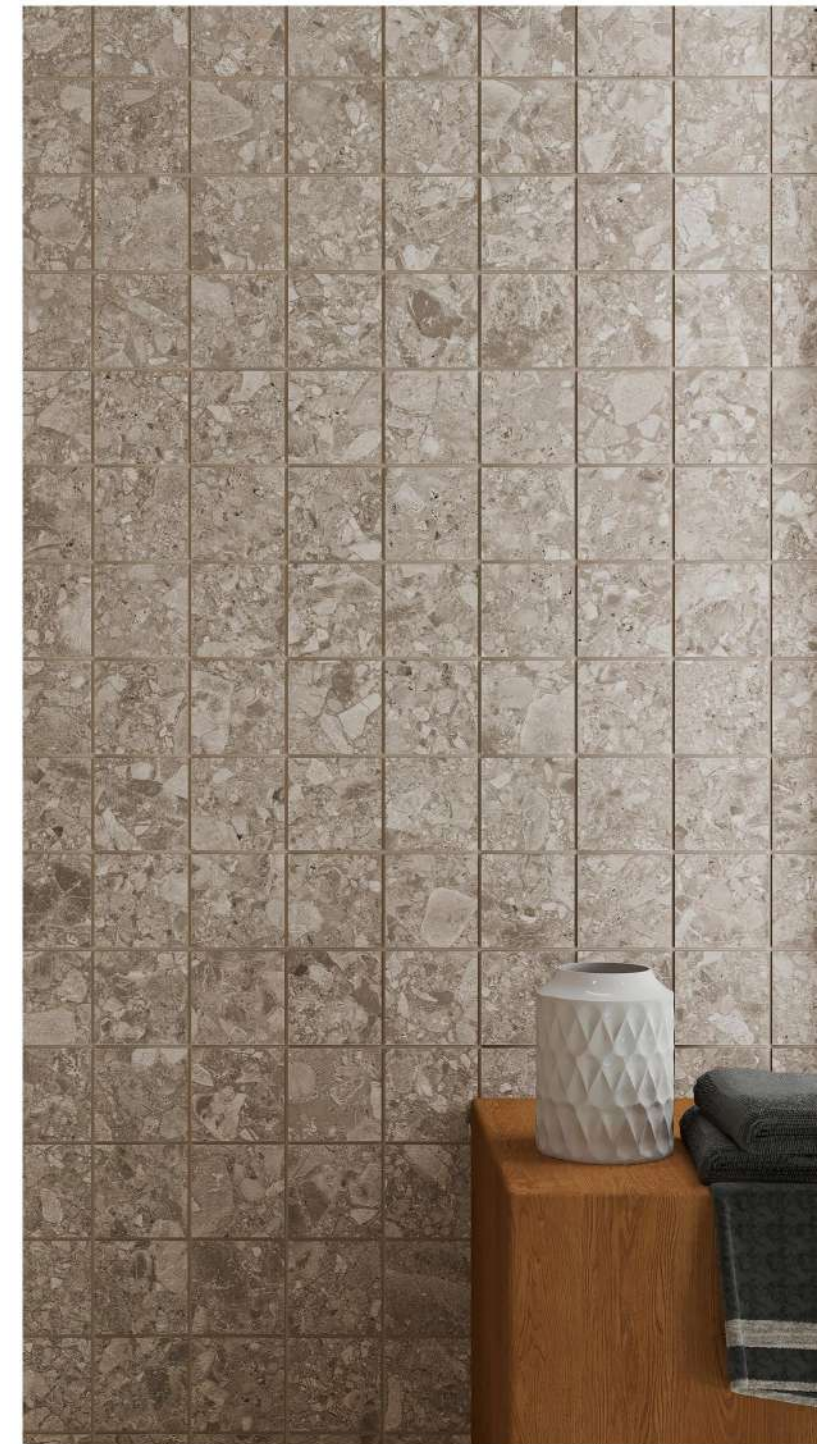


Floor
LECCO 60x120 . 24"x48" TRAP

Oasis's **high-quality** Porcelain stoneware is not damaged by thermal water or disinfectants //

The range of available complementary special pieces and mosaics complete **details** and **finishes** perfectly //

Wall
LECCO MOSAIC 30x30 . 12"x12" NATURAL



**A // HOME BATHROOM
LECCO + BIANCO**

Floor
LECCO 60x120 . 24"x48" TRAP

Wall
BIANCO 30x30 . 12"x12" MOSAIC





A // HOME BATHROOM IVORY

Floor
IVORY 60x120 . 24"x48" NATTUAL

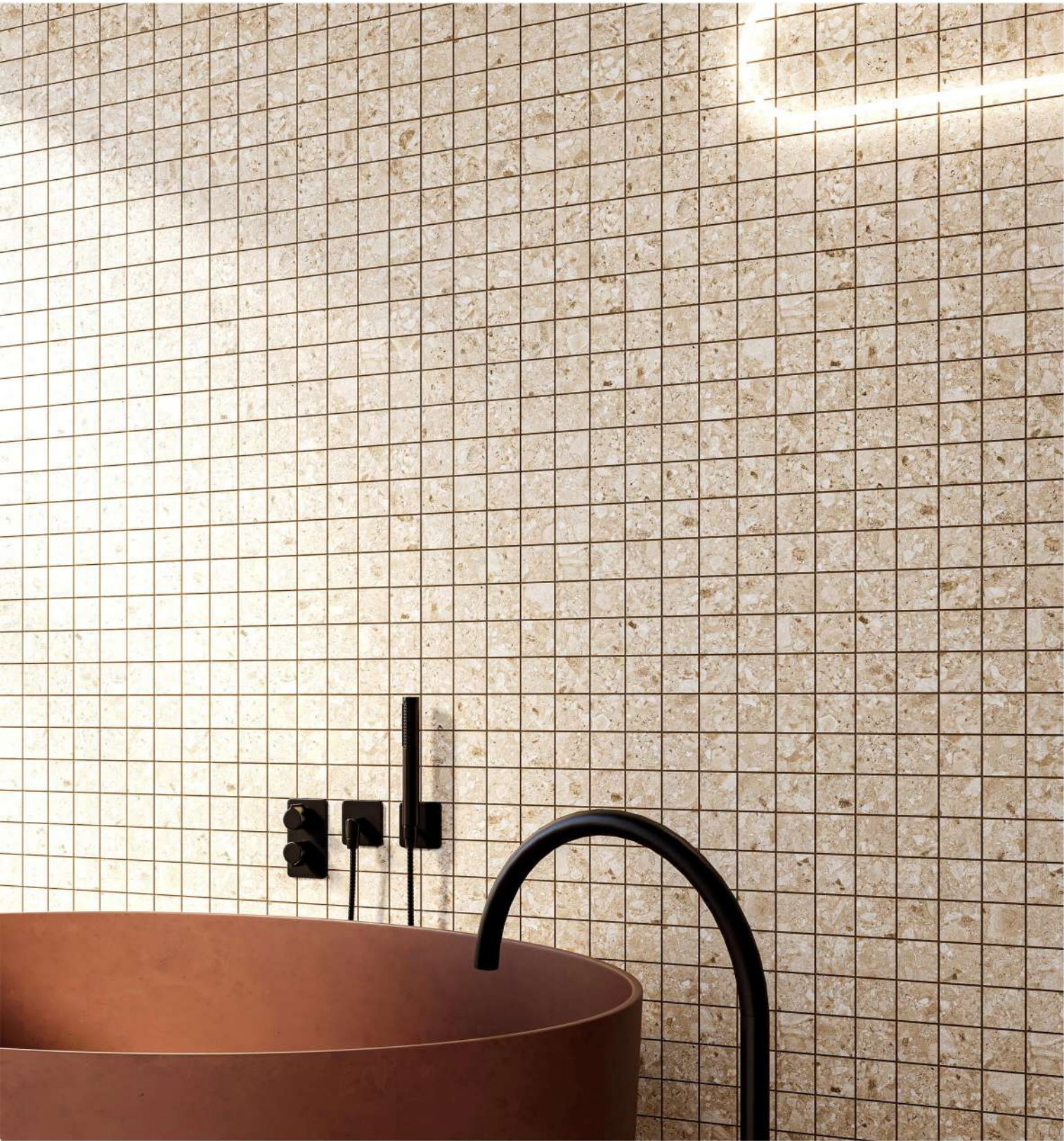
Wall
IVORY 30x30 . 12"x12" MOSAIC

Stylistically **eclectic**,
elegantly coloured, able to
harmonise also with
high-level architectural
contexts: these are some
of **Nexastone**
distinguishing features //



Wall
IVORY 30x30 . 12"x12" MOSAIC

Floor
IVORY 60x120 . 24"x48" TRAP





B // GARDEN VILLA IVORY

Floor
IVORY 60x120 . 24"x48" NATTUAL

Wall
IVORY 60x120 . 24"x48" BAMBU LINNER

The **two finishes**, for indoor spaces (R9) and non-slip R10 for outdoor spaces look similar: the floors of terraces and of indoor spaces **aesthetically** appear to be a single entity, thus increasing the feeling of spaciousness //

#IN&OUT
COORDINATED

Floor
IVORY 60x120 . 24"x48" TRAP

Wall
IVORY 60x120 . 24"x48" BAMBU LINNER



B // CONTRACT DEHOR
SMOKE + ANTRACITE

Floor
SMOKE 60x120 . 24"x48" NATTUAL

Wall
ANTRACITE 60x120 . 24"x48" BAMBU LINNER

The **facade** cladding, also ventilated, is a functional and practical option, thanks to sizes up to 120x120 //

The product range includes extra features like colour **combinations** and matching anti-slip surfaces for outdoor floors //



Floor
SMOKE 60x120 . 24"x48" TRAP



Wall
SMOKE 30x30 . 12"x12" MOSAIC



**C // CONTRACT RESTAURANT
ANTRACITE**

Floor Indoor
ANTRACITE 60x120 . 24"x48" NATURAL

Wall
EARTH 60x120 . 24"x48" NATURAL



NEXASTONE **original**
appearance was born from
the casual **combination**
between portions of different
matter, rich in details, but
with a **refined** overall effect II

Floor Indoor
ANTRACITE 60x120 . 24"x48" TRAP

Wall
ANTRACITE 60x120 . 24"x48"



A // HOME RELEASE
ANTRACITE

Wall
ANTRACITE 60x120 . 24"x48" NATTUAL

Pairing with fabrics, wood and furnishings is always particularly well-matched and pleasant, for all the **six colours** of Nexastone //



Floor
ANTRACITE 60x120 . 24"x48" NATURAL



R9

R10

A+B+C

16MM

V2

9MM

16MM



BAMBU LINNER
R9 RETT



TRAP
R10 RETT

Sizes	NAT	R10
<div><div>9.0 MM</div><div></div></div> <div>60x120 . 24"x48" NATURAL</div>	<div></div>	<div></div>
<div><div></div><div>60x120 . 24"x48" LINNER</div></div>	<div></div>	<div></div>
<div><div></div><div>60x120 . 24"x48" TRAP</div></div>	<div></div>	<div></div>
<div><div></div><div>60x60 . 24"x24" TRAP</div></div>	<div></div>	<div></div>
<div><div>16.0 MM</div><div></div></div> <div>60x120 . 24"x48" TRAP</div>	<div></div>	<div></div>
<div><div></div><div>60x60 . 24"x24" TRAP</div></div>	<div></div>	<div></div>

Mosaic	NAT
<div><div>9.0 MM</div><div></div></div> <div>Mosaico 30x30 . 12"x12" NATURAL 48x48mm Chip</div>	<div></div>



NEXASTONE
Scane for virtual
360°

R9

R10

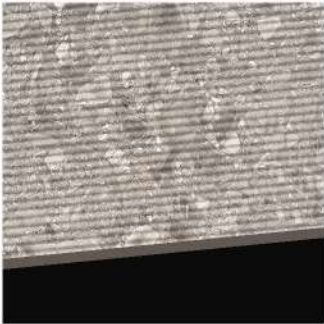
A+B+C

16MM

V2

9MM

16MM



BAMBU LINNER
R9 RETT



TRAP
R10 RETT

Sizes	NAT	R10
<div><div>9.0 MM</div><div></div></div> <div>60x120 . 24"x48" NATURAL</div>	<div></div>	<div></div>
<div><div></div><div>60x120 . 24"x48" LINNER</div></div>	<div></div>	<div></div>
<div><div></div><div>60x120 . 24"x48" TRAP</div></div>	<div></div>	<div></div>
<div><div></div><div>60x60 . 24"x24" TRAP</div></div>	<div></div>	<div></div>

Mosaic	NAT
<div><div>9.0 MM</div><div></div></div> <div>Mosaico 30x30 . 12"x12" NATURAL 48x48mm Chip</div>	<div></div>



NEXASTONE
Scane for virtual
360°

EARTH

TEKNICA HOMOGENIOUS BODY PORCELAIN STONEWARE

R9

R10

A+B+C

16MM

V2

9MM

16MM



BAMBU LINNER
R9 RETT



TRAP
R10 RETT

Sizes	NAT	R10
<div>9.0 MM</div> <div></div> <div>60x120 . 24"x48" NATURAL</div>	<div></div>	
<div></div> <div>60x120 . 24"x48" LINNER</div>	<div></div>	
<div></div> <div>60x120 . 24"x48" TRAP</div>		<div></div>
<div></div> <div>60x60 . 24"x24" TRAP</div>		<div></div>
<div>16.0 MM</div> <div></div> <div>60x120 . 24"x48" TRAP</div>		<div></div>
<div></div> <div>60x60 . 24"x24" TRAP</div>		<div></div>

Mosaic	NAT
<div>9.0 MM</div> <div></div> <div>Mosaico 30x30 . 12"x12" NATURAL 48x48mm Chip</div>	<div></div>



NEXASTONE
Scane for virtual
360°

SMOKE

TEKNICA HOMOGENIOUS BODY PORCELAIN STONEWARE

R9

R10

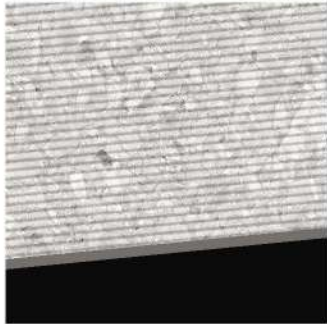
A+B+C

16MM

V2

9MM

16MM



BAMBU LINNER
R9 RETT



TRAP
R10 RETT

Sizes	NAT	R10
<div>9.0 MM</div> <div></div> <div>60x120 . 24"x48" NATURAL</div>	<div></div>	
<div></div> <div>60x120 . 24"x48" LINNER</div>	<div></div>	
<div></div> <div>60x120 . 24"x48" TRAP</div>		<div></div>
<div></div> <div>60x60 . 24"x24" TRAP</div>		<div></div>
<div>16.0 MM</div> <div></div> <div>60x120 . 24"x48" TRAP</div>		<div></div>
<div></div> <div>60x60 . 24"x24" TRAP</div>		<div></div>

Mosaic	NAT
<div>9.0 MM</div> <div></div> <div>Mosaico 30x30 . 12"x12" NATURAL 48x48mm Chip</div>	<div></div>



NEXASTONE
Scane for virtual
360°

IVORY

TEKNICA HOMOGENIOUS BODY PORCELAIN STONEWARE

R9

R10

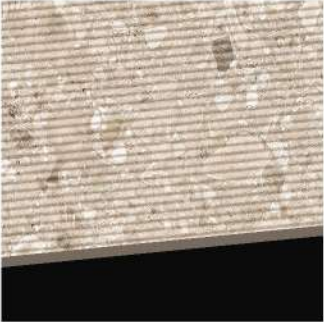
A+B+C

16MM

V2

9MM

16MM



BAMBU LINNER
R9 RETT



TRAP
R10 RETT

Sizes	NAT	R10
<div><div>9.0 MM</div><div></div></div> <div>60x120 . 24"x48" NATURAL</div>	<div></div>	<div></div>
<div><div></div><div></div></div> <div>60x120 . 24"x48" LINNER</div>	<div></div>	<div></div>
<div><div></div><div></div></div> <div>60x120 . 24"x48" TRAP</div>	<div></div>	<div></div>
<div><div></div><div></div></div> <div>60x60 . 24"x24" TRAP</div>	<div></div>	<div></div>

Mosaic	NAT
<div><div>9.0 MM</div><div></div></div> <div>Mosaico 30x30 . 12"x12" NATURAL 48x48mm Chip</div>	<div></div>



NEXASTONE
Scane for virtual
360°

ANTRACITE

TEKNICA HOMOGENIOUS BODY PORCELAIN STONEWARE

R9

R10

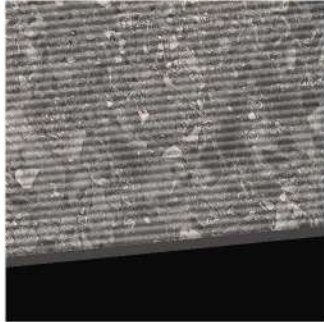
A+B+C

16MM

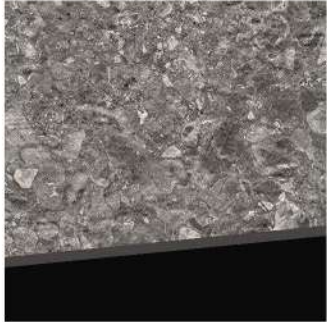
V2

9MM

16MM



BAMBU LINNER
R9 RETT



TRAP
R10 RETT

Sizes	NAT	R10
<div><div>9.0 MM</div><div></div></div> <div>60x120 . 24"x48" NATURAL</div>	<div></div>	<div></div>
<div><div></div><div></div></div> <div>60x120 . 24"x48" LINNER</div>	<div></div>	<div></div>
<div><div></div><div></div></div> <div>60x120 . 24"x48" TRAP</div>	<div></div>	<div></div>
<div><div></div><div></div></div> <div>60x60 . 24"x24" TRAP</div>	<div></div>	<div></div>
<div><div>16.0 MM</div><div></div></div> <div>60x120 . 24"x48" TRAP</div>	<div></div>	<div></div>
<div><div></div><div></div></div> <div>60x60 . 24"x24" TRAP</div>	<div></div>	<div></div>

Mosaic	NAT
<div><div>9.0 MM</div><div></div></div> <div>Mosaico 30x30 . 12"x12" NATURAL 48x48mm Chip</div>	<div></div>



NEXASTONE
Scane for virtual
360°

MOSAICS

TEKNICA HOMOGENIOUS BODY PORCELAIN MOSAIC

MOSAICS COLOUR



PACKING

TEKNICA HOMOGENIOUS BODY PORCELAIN STONEWARE

	PCS // BOX	SQM // BOX	KGS // BOX
9.0 MM			
60x120 . 24"x48" RETT / NATURAL	2	1.44	28.5 kg. App.
60x120 . 24"x48" RETT / TRAP	2	1.44	28.5 kg. App.
60x120 . 24"x48" RETT / BAMBU LINNER	2	1.44	28.5 kg. App.
60x60 . 24"x24" RETT / NATURAL	4	1.44	28.5 kg. App.
60x60 . 24"x24" RETT / TRAP	4	1.44	28.5 kg. App.
16.0 MM			
60x120 . 24"x48" RETT / NATURAL	2	1.44	52.00 kg.
60x60 . 24"x24" RETT / NATURAL	2	0.72	26.00 kg.



Sensitech

SAFE. SOFT. SMART.

INDOOR & OUTDOOR
CONTINUITY

SOFT TO
THE TOUCH

EXTREMELY
SAFE - R10

HYGIENIC AND
EASY TO CLEAN

LONG-LASTING
QUALITIES

PREMIUM
TECHNOLOGY

SENSITECH: Elevating Elegance in Porcelain Tiles

Unveiling a new era of sophistication and durability, SENSITECH stands as the epitome of excellence in the realm of full-body porcelain tiles. Renowned for its commitment to quality and innovation, SENSITECH transforms spaces into timeless masterpieces, blending aesthetics with resilience.

Key Features:

Unparalleled Craftsmanship: SENSITECH tiles are crafted with meticulous attention to detail, ensuring every tile embodies the highest standards of artistry and precision.

Cutting-Edge Technology: Leveraging state-of-the-art manufacturing processes, SENSITECH integrates cutting-edge technology to produce tiles that not only captivate the eye but also endure the test of time.

Versatility in Design: From contemporary chic to classic elegance, SENSITECH offers a diverse range of designs and patterns, allowing architects, designers, and homeowners to bring their visions to life.

Full-Body Composition: SENSITECH's commitment to quality extends to the core of its tiles. The full-body porcelain composition ensures uniform color and texture throughout, enhancing durability and resistance to wear and tear.

Environmental Responsibility: SENSITECH places a premium on sustainability, employing eco-friendly practices in its manufacturing processes and sourcing materials responsibly.

Applications:

Whether adorning residential spaces, commercial establishments, or public areas, SENSITECH tiles redefine interior and exterior design, offering a harmonious blend of aesthetics and functionality.

Experience the Essence of Luxury:

With SENSITECH, each tile is not just a surface but a statement—an embodiment of luxury, endurance, and timeless style. Elevate your spaces with SENSITECH, where every step is a testament to perfection in porcelain.

Technical features		Test Method	Requirements for nominal size N /			Matte Matte ± 9 mm
			7 cm ≤ N < 15 cm	N ≥ 15 cm		
			MM	(%)	(mm)	
	Length and width	ISO 10545-2	± 0,9 (*) Non-rect. ± 0,4 (*) Rect.	± 0,6 (*) Non-rect. ± 0,3 (*) Rect.	± 2,0 (*) Non-rect. ± 1,0 (*) Rect.	Suitable for Conforme
	Thickness		± 0,5 (**)	± 5 (**)	± 0,5 (**)	Suitable for Conforme
	Straightness of sides		± 0,8 (****) Non-rect. ± 0,4 (****) Rect.	± 0,5 (****) Non-rect. ± 0,3 (****) Rect.	± 1,5 (****) Non-rect. ± 0,8 (****) Rect.	Suitable for Conforme
	Rectangularity (Measurement only on short edges when L/l ≥ 3)		± 0,8 (****) Non-rect. ± 0,4 (****) Rect.	± 0,5 (****) Non-rect. ± 0,3 (****) Rect.	± 2,0 (****) Non-rect. ± 1,5 (****) Rect.	Suitable for Conforme
	Surface flatness	ISO 10545-2	c.c. ± 0,8 Non-rect. c.c. ± 0,6 Rect.	c.c. ± 0,5 Non-rect. c.c. ± 0,4 Rect.	c.c. ± 2,0 Non-rect. c.c. ± 1,8 Rect.	Suitable for Conforme
			e.c. ± 0,8 Non-rect. e.c. ± 0,6 Rect.	e.c. ± 0,5 Non-rect. e.c. ± 0,4 Rect.	e.c. ± 2,0 Non-rect. e.c. ± 1,8 Rect.	
			w. ± 0,8 Non-rect. w. ± 0,6 Rect.	w. ± 0,5 Non-rect. w. ± 0,4 Rect.	w. ± 2,0 Non-rect. w. ± 1,8 Rect.	
	Water absorption (in% by mass)	ISO 10545-3	E _v ≤ 0,5% Individual Maximum 0,6%			≤ 0,1 %
		ASTM C373	Requirement ANSI A137.1-2017 Water absorption max ≤ 0,5%			≤ 0,5 %
	Breaking strength	ISO 10545-4	S ≥ 700N (for thickness < 7,5 mm - per spessore < 7,5 mm) S ≥ 1300N (for thickness ≥ 7,5 mm - per spessore ≥ 7,5 mm)			S ≥ 1500 N
	Modulus of rupture		R ≥ 35 N/mm ²			R ≥ 40 N/mm ²
	Bending strength and breaking load	EN 1339 Annex F	-			-
	Impact resistance, as coefficient of restitution	ISO 10545-5	Declared value			≥ 0,55
	Mohs hardness	EN 101	-			6
	Resistance to deep abrasion of unglazed tiles (removed volume)	ISO 10545-6	≤ 175 mm ³			≤ 150 mm ³
	Coefficient of thermal linear expansion	ISO 10545-8	Declared value			≤ 7MK ⁻¹
	Thermal shock resistance	ISO 10545-9	Pass according to EN ISO 10545-1			Resistant
	Moisture expansion (in mm/m)	ISO 10545-10	Declared value			≤ 0,01% (0,1mm/m)
	Frost resistance	ISO 10545-12	Pass according to EN ISO 10545-1			Resistant
	Bond strength/adhesion for improved cementitious adhesives	EN 1348	Declared value			≥ 10 N/mm ² (Class C2 - EN 12004)
	Reaction to fire	-	Class A1 or A1 _s			A1 - A1 _i
	Resistance to household chemicals and swimming pool salts	ISO 10545-13	Minimum Class B			A
	Resistance to low concentrations of acids and alkalis		Declared Class			LA
	Resistance to high concentrations of acids and alkalis		Declared Class			HA
		Resistance to staining, for unglazed tiles	ISO 10545-14	Declared Class		
	Shod Ramp Test	EN 16165 ANNEX B (EX DIN 51130)	Declared value			R9
	Barefoot Ramp Test	EN 16165 ANNEX A (EX DIN 51097)	Declared value			A+B
	Pendulum Friction Test	BS 7976	PTV ≥ 36 classifies the surface as "low slip risk"			≥ 36 Dry ≥ 36 Wet
		AS 4586	Declared Classification of the new pedestrian surface materials according to the Pendulum Test			Class P3
		UNE-ENV 12633	Declared value			Class C2
	Coefficient of friction (COF)	B.C.R.A. Rep. CEC/81	D. M. 236/89 del 14/06/89 μ >0,40 per elemento scivolante cuoio su pavimentazione asciutta μ >0,40 per elemento scivolante gomma dura su pavimentazione bagnata			> 0,40 Asciutto > 0,40 Bagnato
	Dynamic coefficient of friction (DCOF)	ANSI A 326.3	-			wet DCOF ≥ 0,50

NEXASTONE

#SIZE

60x120
24"x48" 9mm

60x120
24"x48" 16mm

60x60
24"x24" 9mm

60x60
24"x24" 16mm

30x30
12"x12"

#COLOUR

IVORY

ANTRACITE

EARTH

SMOKE

BIANCO

LECCO

#SURFACE

Natural

Linner

Trap



oasis®
Your Own Dream